



This Photo by Unknown Author is licensed under CC BY-SA-NC



Norfolk Public Schools
The cornerstone of a proudly diverse community

CONTINUING THE DRIVE

**NO MATTER
WHAT**



Young Scholars Program

**An Autonomous Learner Model Program for Identified
Gifted Students**



*Thinking to Learn &
Learning to Think Independently*

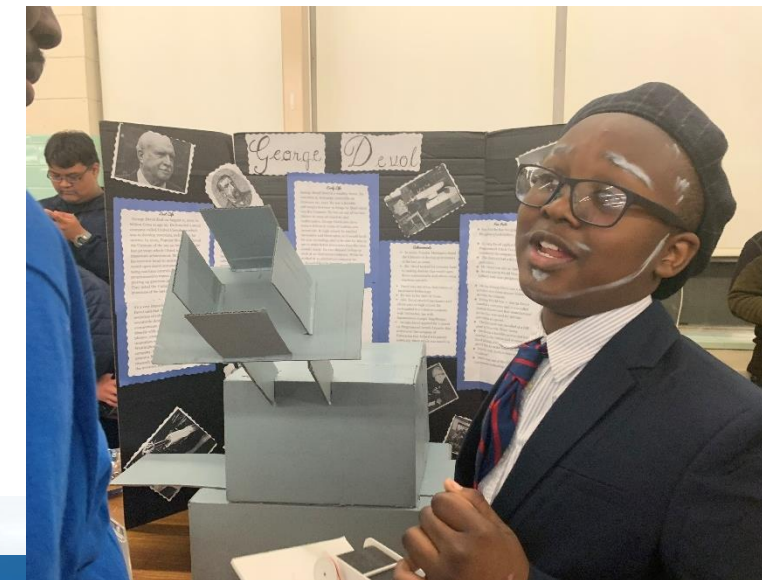




THE YOUNG SCHOLARS

...a middle-years magnet program for highly motivated learners identified as gifted, with specially trained teachers.

This “school-within-a-school” is housed at Rosemont Academy Middle School with specially trained faculty.



The Young Scholars' Curriculum:

Built around established principles of Gifted Education.



- Thoughtful processing of content
- Acceleration, depth, problem solving, and higher-order thinking
- Enhanced and expanded content standards
- Promotion of independence, choice and self-directed learning

Scholars enroll in high school credit courses in Math, Science, History and Foreign Language beginning grade 7.

A variety of after-school academic enrichment and athletics are encouraged.

Autonomous Learner Model (ALM)

In-Depth Study



Provides students in-depth study in areas of interest through seminars, master classes and mentorships



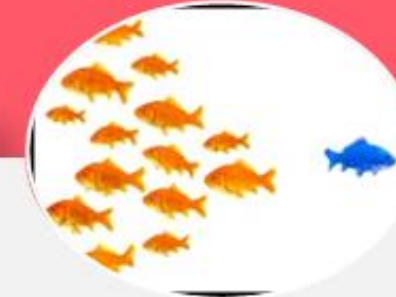
Student Choice



Students choose topics of interest to investigate and develop autonomy in their thought as well as their actions.



Independence



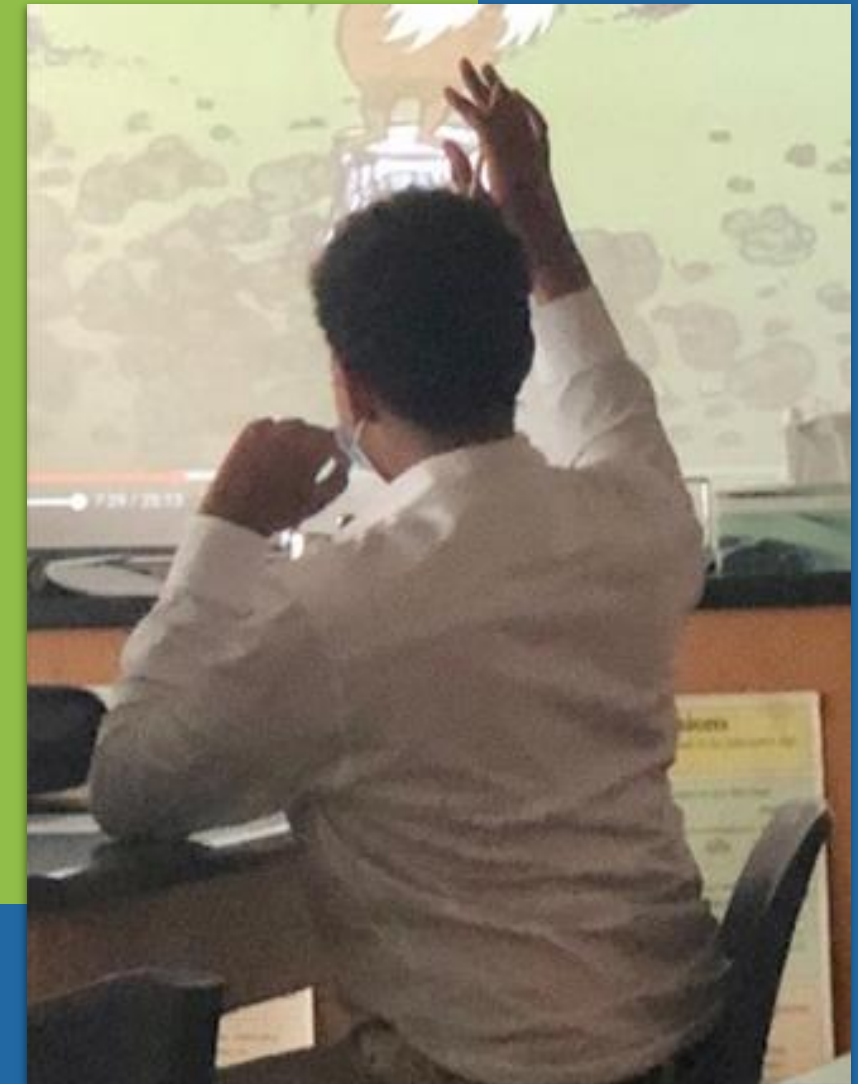
Students build soft skills such as inter/intrapersonal skills, organizational skills, and understanding oneself as a gifted learner.



Young Scholars' Focus

The Autonomous Learner

“One who solves or develops new ideas through a combination of divergent and convergent thinking and functions with minimal external guidance....” *(Betts & Knapp, 1981)*



A Self-Directed Learner

Why Young Scholars?

1. The Young Scholar program is the **ONLY** middle school program in Norfolk designed to challenge gifted learners.
2. The teachers are certified in gifted education, which gives the program an authentic, elevated learning experience.
3. Our focus is not only on the intellect; we also nurture the social and emotional aspects and scholarly domains of well-rounded, lifelong learners.
4. The foundation of instruction is the “what”, but ceilings are shattered with the “why” and the “how”.



If you want your student to understand at a higher level...this is the right program:



- How can a novel written a hundred years ago still have relevance in our "modern" society?
- Why are there neutrons if they do not help balance the charge of an atom?
- Why is it that you can add two odd numbers, and the product can be even; but you can never add two even numbers to create an odd number?
- In history, why do we look to the past, to understand our future?
- DID YOU KNOW...The refrigerator does not, in fact, "cool" your leftovers, it extracts thermal energy from them. *The concept of "cold" is actually an artificial construct!*

Application Requirements

- Rising 6th grader/Norfolk resident
- Identified Gifted
- Positive discipline and attendance records
- A well written application essay
- B grade average in elementary core subjects
- Pass all 4th/5th grade SOL Tests
- Interview/product presentation (select applicants*) with onsite writing sample.

**Not all applicants are invited to interview*

Are YOU a Young Scholar?



Information Session

**Monday, November 4th 5:30
– 7:30 pm**

Rosemont Middle School Academy
1330 Branch Road, Norfolk 23513

Thank You